

FBs OS Update utility usage guide

The firmware of FBs-PLC can be updated thru the execution of os_update.exe.

For the most up to date PLC OS image file please visit our Web-Site at :

<http://www.fatek.com>.

The steps needed to take in order to update the FBs-PLC will be described at below:

Step 1:

Go to Web-Site to download the latest version of OS image. In this guide we will use FbsOSV401.OS for an example.

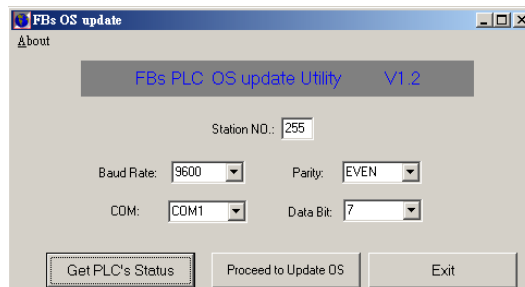
Step 2:

The PLC contents include the user's program and data will be cleaned after perform the OS update operation, therefore please first make sure you have a copy of the project file associated to the PLC that OS are going to update.

Step 3: Execute the os_update.exe, which can be startup by following path



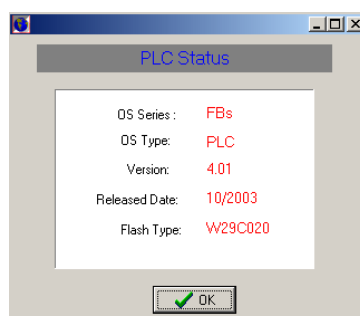
After execution the screen will be shown



Step 4:

Setup the communication parameter according to the COM setup of the attached PLC port.

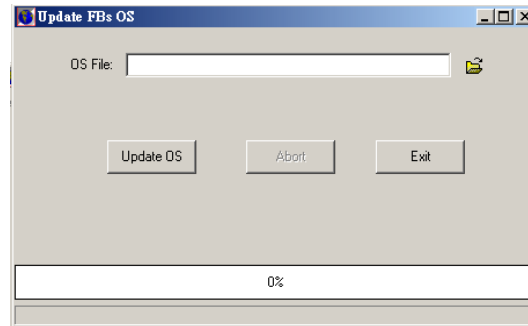
The station no. can set to 255 if the PLC station no is unknown. When the setup is complete then click the [get PLC's status] button. If the PLC connection is successful, following screen will be shown



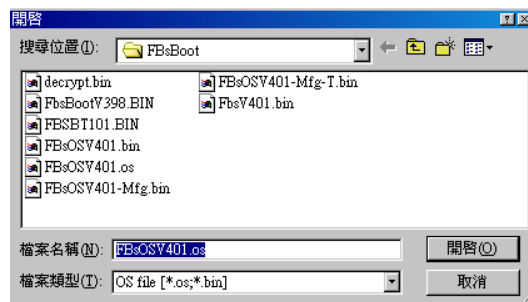
step5 : Make sure if the PLC OS need to update

From the above screen can get the information of the PLC OS version. Click the [OK] button when finish this step which will brought back the screen at step 3.

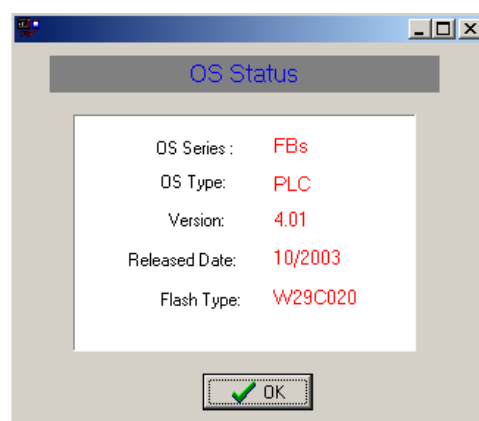
If the version is older than the latest version in hand then click the [Proceed to Update OS] button otherwise just click [exit]. When click the [Proceed to Update OS] button following screen will be shown.



click  to locate the OS image file you have previous got in step 1

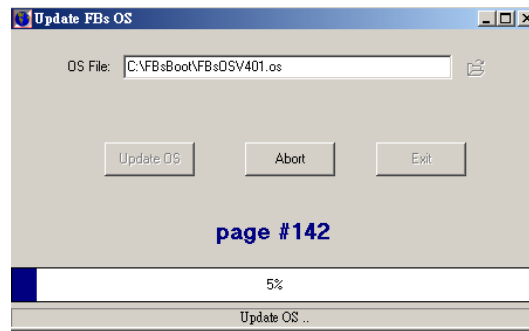


After finish the selection of OS image the following screen will be shown from which can know the exact version of OS image. Click [OK] button proceed to next step.

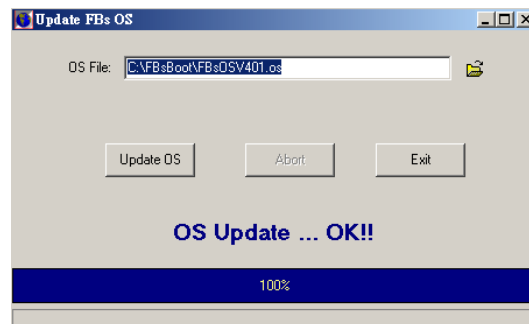


step 6 : Start to update the OS

Click [Update OS] button to start the update OS processing



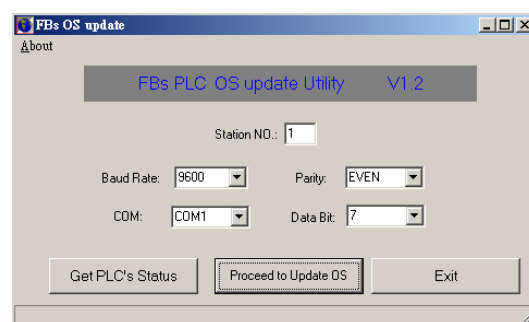
When finish with success the screen will be shown as below



Should the update process is fail in half way due to the power failure or other reasons, the PLC will stay in update state which can recognize by watch the 'long-short-short' flash pattern of 'RUN' LED. Under such circumstance should repeat the step 5 ~ step 6 operation.

Click [Exit] to finish this step and back to the step #2 screen.

step 7 : Make sure the PLC OS is update with success



The operation of this step is the same as step #4. From the checking of PLC OS version no. to make sure the update process is correct.

Appendix:

The procedure to convert the FBe-xx(PLC OS V3.X) project into FBs-xx(OS V4.xx) project

Step1 : Execute the Win_Proladder (V2.00 or latter)

step 2 : Open the old FBe-xx project

step 3 : Perform the conversion process

There are two ways to convert the FBe-xx(PLC OS V3.X) project into FBs-xx(OS V4.xx) project.

Method 1 : at off-line state follow the menu path [Project]->[Program Size]->[FBe(8K/13K)->FBs(20K)] to perform the conversion.

Method 2 : at off-line state follow the menu path [Project]->[Project information]. At project information window modify the 'Model Name' field to corresponding FBs model which in turn will start the conversion process.